

CITY OF WILLIAMSPORT, PA RESOLUTION

RESOLUTION # 9153

DATE 5-27-21

TITLE

RESOLUTION TO COMMIT TO FUNDING FOR THE GREENWAYS, TRAILS, AND RECREATION PROGRAM FOR YOUNG'S WOODS PARK

Be it RESOLVED, that the City of Williamsport in Lycoming County hereby request a Greenways, Trails, and Recreation Program grant of \$245,625 from the Commonwealth Financing Authority for the reconstruction and rehabilitation of Young's Woods Park in the City of Williamsport.

Be it FURTHER RESOLVED, that the City of Williamsport will provide a match amount for the above mentioned grant in the amount of \$43,346, if the grant is awarded to the City of Williamsport.

Approved

Jessie M. Freese

City Clerk

Donald Allison

President



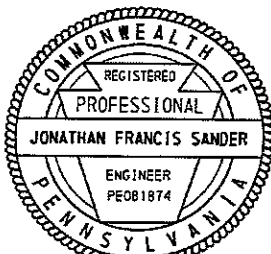
CITY OF WILLIAMSPORT

DEPARTMENT OF STREETS, PARKS & FLOOD CONTROL

Opinion of Probable Cost - Youngs Woods Park Improvements

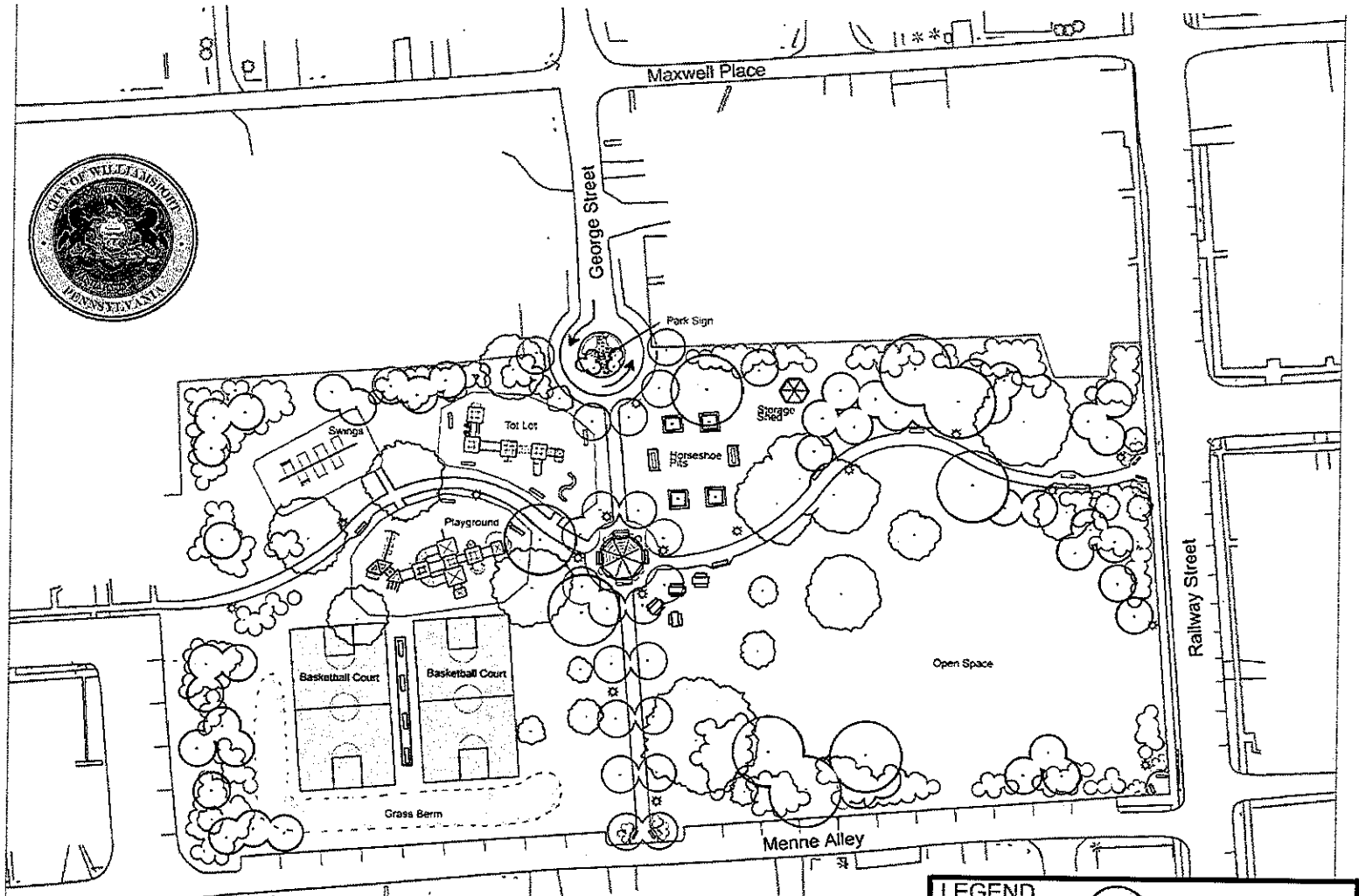
Work Item	No of Units	Unit Cost	Unit Type	Total Cost
Demolition / Site Preparation				
Mobilization (5%)				14,685
Silt Fence	1,100	4	LF	5,140
Removal of Pavillion (By Others)				6,675
Removal of Parking Area / Volleyball Court				6,675
Removal of Basketball Court	570	12	CY	9,131
Fencing Removal	800		LF	10,013
Asphalt Removal (Milling or Excavation)	645	12	CY	10,333
Disposal Costs				13,350
Topsoil (8")- Furnished and Placed	925	25	CY	30,872
Fine Grade, Seed, Mulch	2,777	2	SY	5,561
Paving				
Menne Alley Parallel Parking				
No 2A Subbase, 6" Depth	386	6	SY	3,092
Bituminous Concrete Base Course, 4" Depth	386	11	SY	5,411
Bituminous Wearing Course, 1-1/2" Depth	386	5	SY	2,448
Menne Alley Avenue - Parking Striping	120	1	LF	200
Painting Accessible Spaces and Signs				668
Basketball Court				
Basketball Court	1,038	25	SY	34,643
Court Surface and Striping				6,675
Basketball Goals	4	750	EACH	4,005
Structures				
Gazebo	1	30,000	EACH	40,050
Gazebo - elevated concrete pad	1	5,500	EACH	7,343
Landscaping				
Lawn Areas - Seeding and Mulch	1,000	2	SY	2,003
Professional Services				
Survey				15,000
Design				35,000
Construction Observation				20,000
Total =				288,971

The Engineer's/Architect's opinion of probable Construction Cost are made on the basis of Engineer's/Architect's experience and qualifications and represent the Engineer's/Architect's judgment as an experienced and qualified professional generally familiar with the construction industry. However, since the Engineer/Architect has no control over the cost of labor, materials, equipment, or services furnished by others, or over contractors' methods of determining prices, or over competitive bidding or market conditions, Engineer/Architect cannot and does not guarantee that proposals, bids, or actual Construction Costs will not vary from opinions of probable Construction Cost prepared by the Engineer/Architect.



5-19-2021

Jon F Sander, PE
Williamsport City Engineer



Young's Woods Park

LEGEND

	Existing Tree		Large Tree		Picnic Table
	Tree		Path Light		
	Shrubbery		Safety Surface		
	Bench				

N 0 30 60 Feet